

OFFICE SUBLEASE OPPORTUNITY

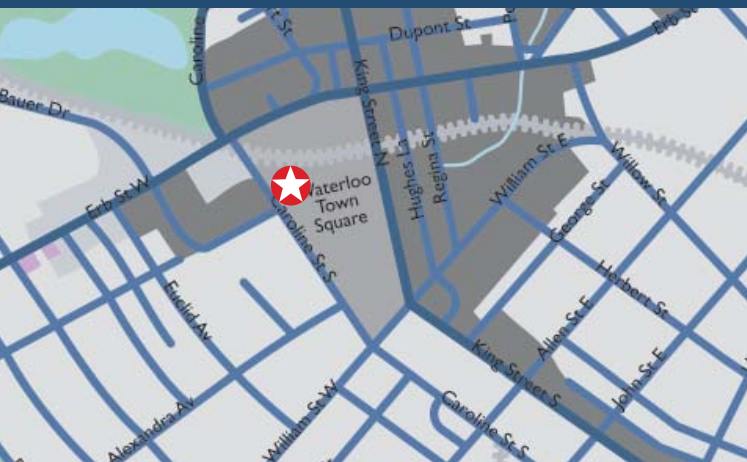
UPTOWN WATERLOO TOWER



20 ERB STREET WEST, WATERLOO

- ▶ Up to 10,457 square feet available for sublease over two floors
- ▶ Configurations of 3,477 sf, 6,980 sf or 10,457 sf available
- ▶ Well known office tower in Uptown Waterloo
- ▶ Join tenants such as BMO, United Way and ALT Software
- ▶ Coveted location with great access to amenities and all the prominence Uptown Waterloo can offer
- ▶ Well appointed space features, private offices, kitchenette, ample natural light
- ▶ Term expires December 30th, 2015
- ▶ 26 parking spots
- ▶ Additional Rent: \$12.40 per square foot including hydro and janitorial

Marsland Centre, Waterloo



Offered at:
\$11.50 PSF NET

JOHN LIND
Sales Representative
519.570.1330 x 223
john.lind@colliers.com

COLLIERS INTERNATIONAL
30 Duke Street West, Suite 400
Kitchener, ON N2H 3W5
www.colliers.com/southwesternontario



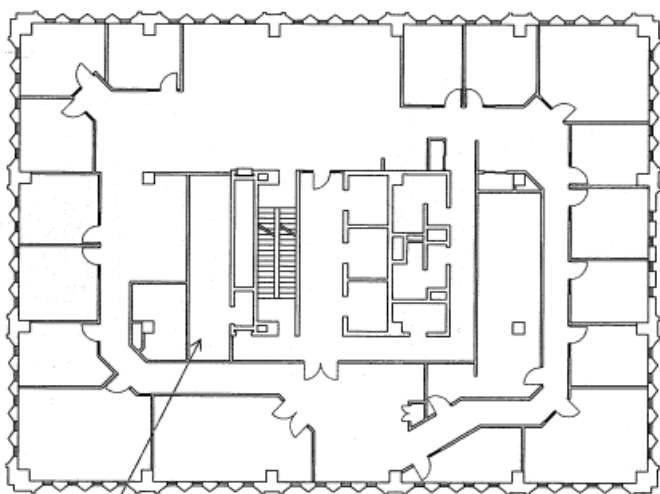
Our Knowledge is your Property®

OFFICE SUBLEASE OPPORTUNITY

UPTOWN WATERLOO TOWER

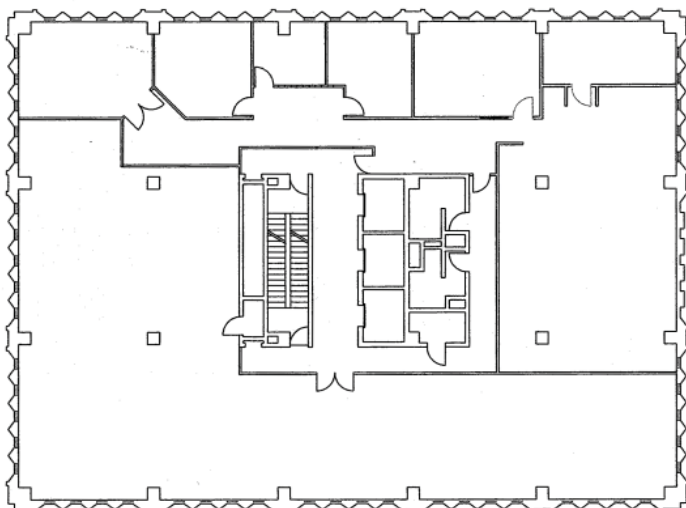
MARSLAND CENTRE | 20 ERB STREET WEST | WATERLOO

7TH FLOOR PLAN



7th floor space NIC - 220 sq ft

8TH FLOOR PLAN



JOHN LIND
Sales Representative
519.570.1330 x 223
john.lind@colliers.com

COLLIERS INTERNATIONAL
30 Duke Street West, Suite 400
Kitchener, ON N2H 3W5
www.colliers.com/southwesternontario



Our Knowledge is your Property®

This document has been prepared by Colliers International for advertising and general information only. Colliers International makes no guarantees, representations or warranties of any kind, expressed or implied, regarding the information including, but not limited to, warranties of content, accuracy and reliability. Any interested party should undertake their own inquiries as to the accuracy of the information. Colliers International excludes unequivocally all inferred or implied terms, conditions and warranties arising out of this document and excludes all liability for loss and damages arising there from. Colliers International is a worldwide affiliation of independently owned and operated companies.