

97 Randall Drive, Waterloo

9,706 sq ft available for lease

Location:	Situated in Waterloo's Pressworks Tech Park
Zoning:	I1-6
Loading:	1 — 8' x 9' dock level door 1 — 10' x 12' drive-in door
Ceiling height:	17' clear
Power:	200 amps; 550/600 volts
Bay size:	40' x 28'
Possession:	Immediate
Lease rate:	\$12.00/sq ft Net
Additional rent:	\$7.01/sq ft (estimated 2010)

Peter Kruschen, SIOR

Sales Representative
peter.kruschen@dtzbarnicke.com
Tel: 519 746 6300 x 223

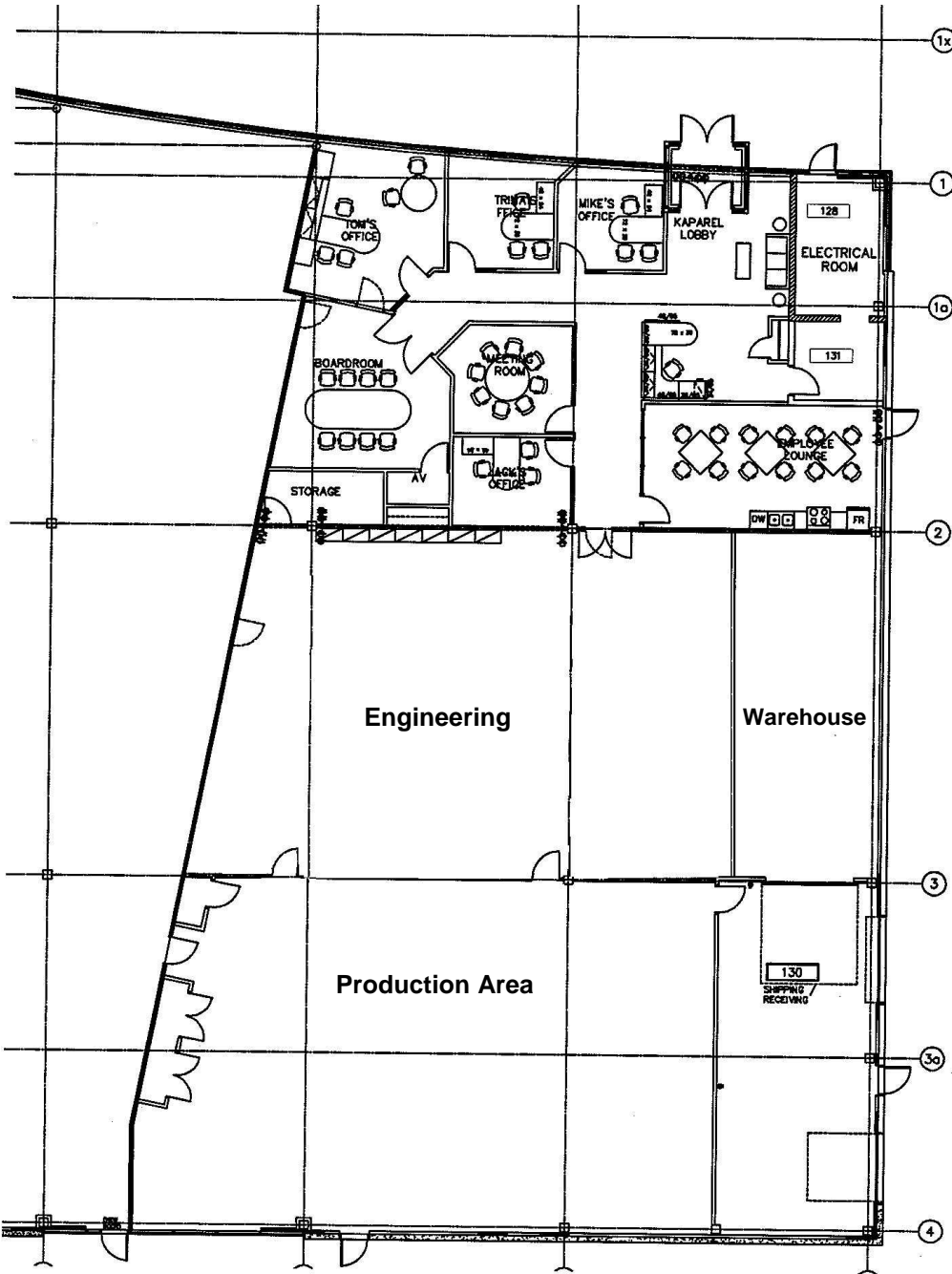
DTZ Barnicke

Waterloo Wellington Ltd.

219 Labrador Drive, Suite 200
Waterloo, Ontario N2K 4M8

Tel: 519 746 6300

Fax: 519 746 0455



- Signature building in Waterloo's Pressworks Technology Park
- Abundant free on-site parking
- Very high quality construction, good level of finishes and future expansion potential
- Dock and drive-in loading
- Good access to the Conestoga Expressway (Hwy 85)
- Near many amenities including restaurants, financial institutions, retail shopping centres, bus routes and more

Peter Kruschen, SIOR

Sales Representative
 peter.kruschen@dtzbarnicke.com
 Tel: 519 746 6300 x 223

**DTZ Barnicke
 Waterloo Wellington Ltd.**

219 Labrador Drive, Suite 200
 Waterloo, Ontario N2K 4M8

Tel: 519 746 6300
 Fax: 519 746 0455
 www.dtzbarnicke.com