

Available for immediate occupancy

572 Weber Street North, Unit 3

2,500 sq ft office space available in multi-tenant building

Location: Located at the corner of Weber Street North and Northfield Drive

Zoning: I—Industrial

Ceiling height: 14' clear

Available area: 2,500 sq ft

Lease rate: \$12.25/sq ft Net

Additional rent: \$4.80/sq ft (2010 estimate)

Comments:

- Close proximity to the Conestoga Expressway (Hwy 85)
- Ideal for sales, service, tech and professional uses
- Fully air conditioned, large hydro service, excellent signage
- Ample on-site parking at no additional cost
- Close to many amenities including shopping, public transit, financial institutions and recreational facilities

Peter Kruschen, SIOR

Sales Representative
peter.kruschen@dtzbarnicke.com
Tel: 519 746 6300 x 223

DTZ Barnicke

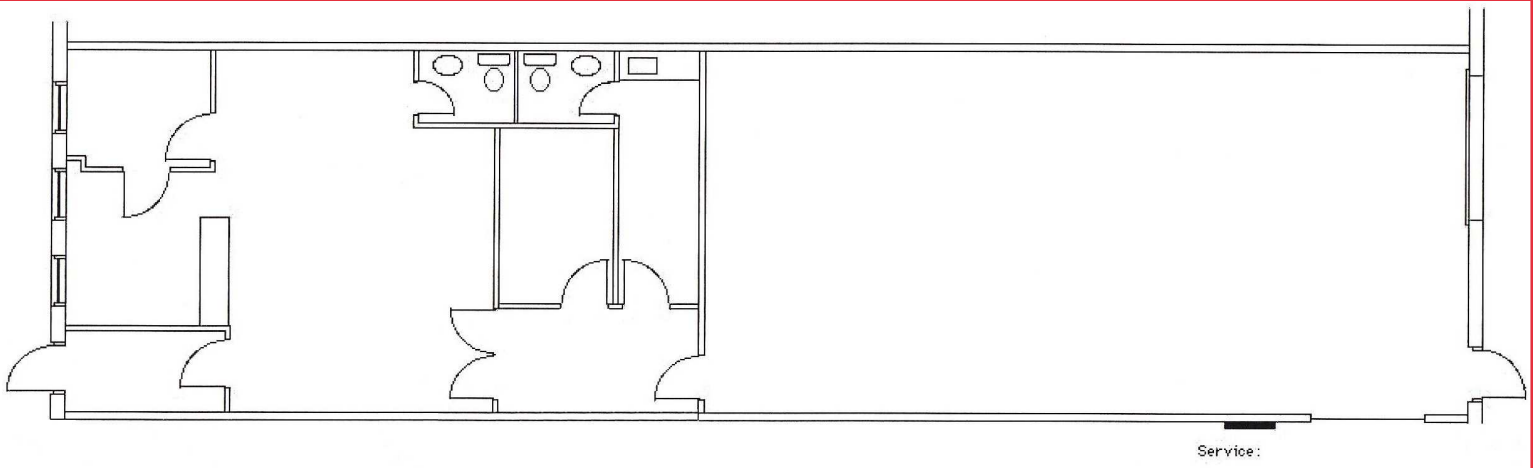
Waterloo Wellington Ltd.

219 Labrador Drive, Suite 200
Waterloo, Ontario N2K 4M8

Tel: 519 746 6300

Fax: 519 746 0455

Unit 3 Floor Plan



Peter Kruschen, SIOR

Sales Representative

peter.kruschen@dtzbarnicke.com

Tel: 519 746 6300 x 223

DTZ Barnicke

Waterloo Wellington Ltd.

219 Labrador Drive, Suite 200

Waterloo, Ontario N2K 4M8

Tel: 519 746 6300

Fax: 519 746 0455

www.dtzbarnicke.com